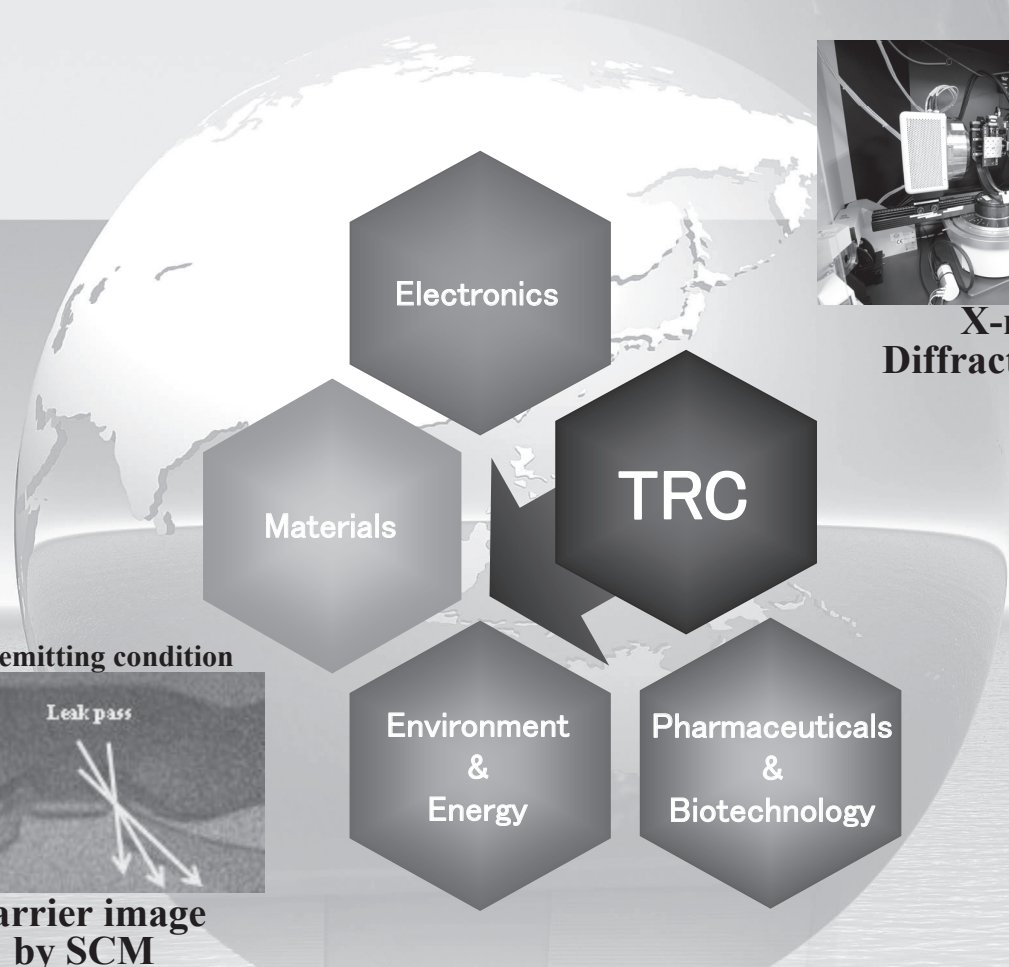


TORAY RESEARCH CENTER

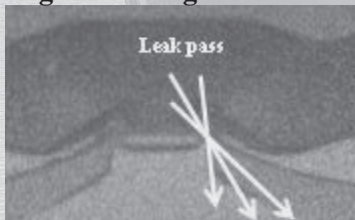
TRC's comprehensive technical expertise in support of R&D and Production

TRC's superior ability to meet the problem-solving requirements of clients is based on a long track record and extensive experience in analysis and materials evaluation.

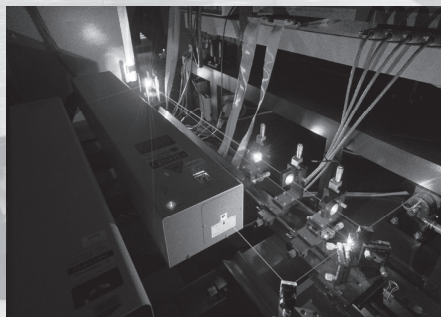


X-ray Diffractometer

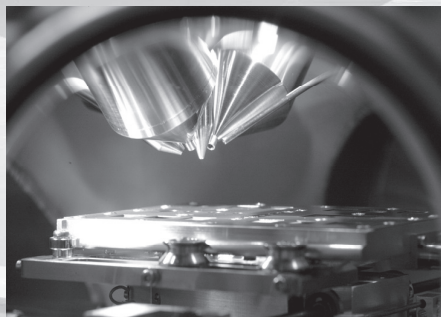
Light-emitting condition



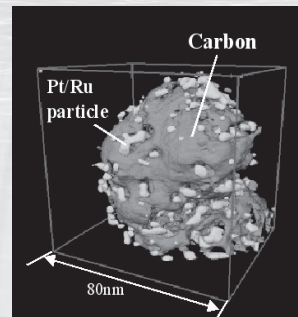
Carrier image by SCM



Laser Raman spectrometer



Surface analysis under ultra high vacuum condition (SIMS analysis)



3-D reconstructed image of catalyst for fuel cell by TEM

 Toray Research Center, Inc.
<http://www.toray-research.co.jp/>

Tokyo +81-3-3245-5665
Tsukuba +81-29-849-5539
Nagoya +81-52-571-5510

Osaka +81-6-6445-4065
Fukuoka +81-92-752-7948
Korea +82-31-442-0483 (Korea Technical Service)